

# Attention!!

## Measuring sections in the bay of Kiel!

### Information for recreational and fishing crafts

For long-term studies three measuring sections have been placed in the bay of Kiel northwest and north of the shoal Stollergrund (notice BfS 106/17).

**R1:**

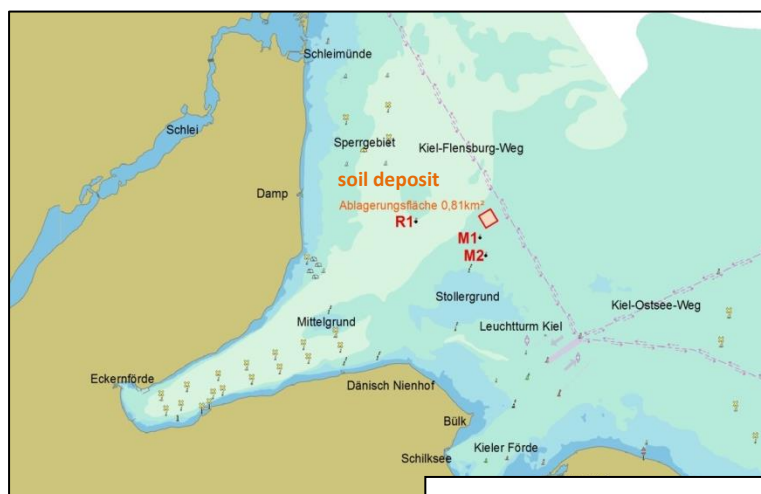
54°33,9475'N 010°08,6098'E

**M1:**

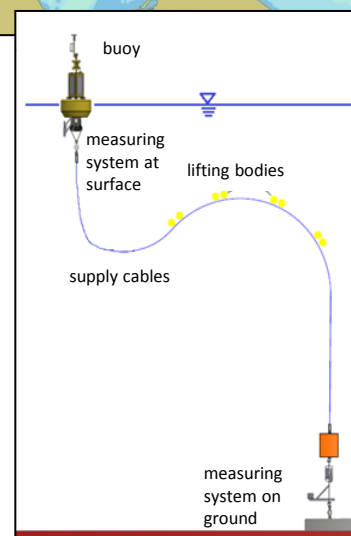
54°33,3613'N 010°12,5033'E

**M2:**

54°32,7497'N 010°12,8551'E



The yellow buoys are equipped with radar reflector and lighting. **Please pass the buoys in a safe distance about >50 m!** The supply cables are balanced by lifting bodies underneath the surface for appropriate measurement (see graph).



The data acquisition is important for planning and later operating a soil deposit in this area for dredged materials. It is part of the extension project of the Kiel Canal.

The buoys will stay in this formation for minimum one year. In the operating phase additional buoys will be placed around the soil deposit area. For further information see [www.portalnok.de](http://www.portalnok.de)

#### Contact:

Wasserstraßen- und Schifffahrtsamt Kiel-Holtenau  
Fachbereich Investitionen NOK  
Schleuseninsel 2, DE-24159 Kiel  
E-mail: [Geschaeftsstelle-FBI.WSA-Ki@wsv.bund.de](mailto:Geschaeftsstelle-FBI.WSA-Ki@wsv.bund.de)  
Phone: +49 431 3603-371